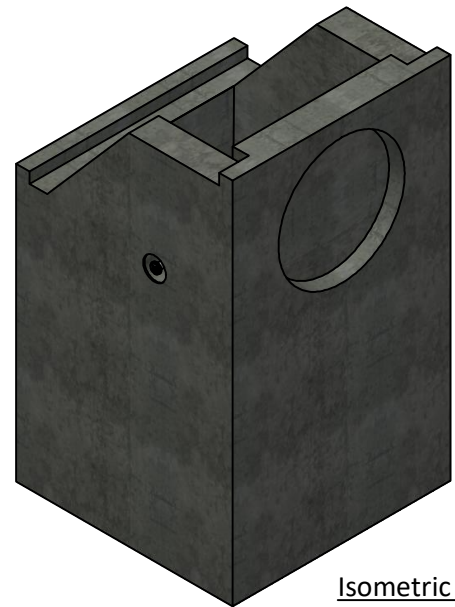
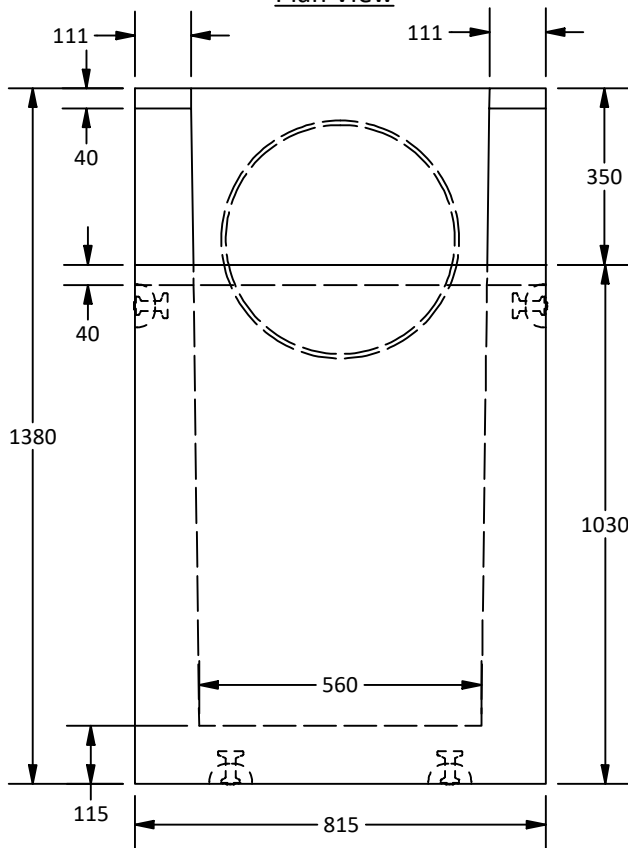


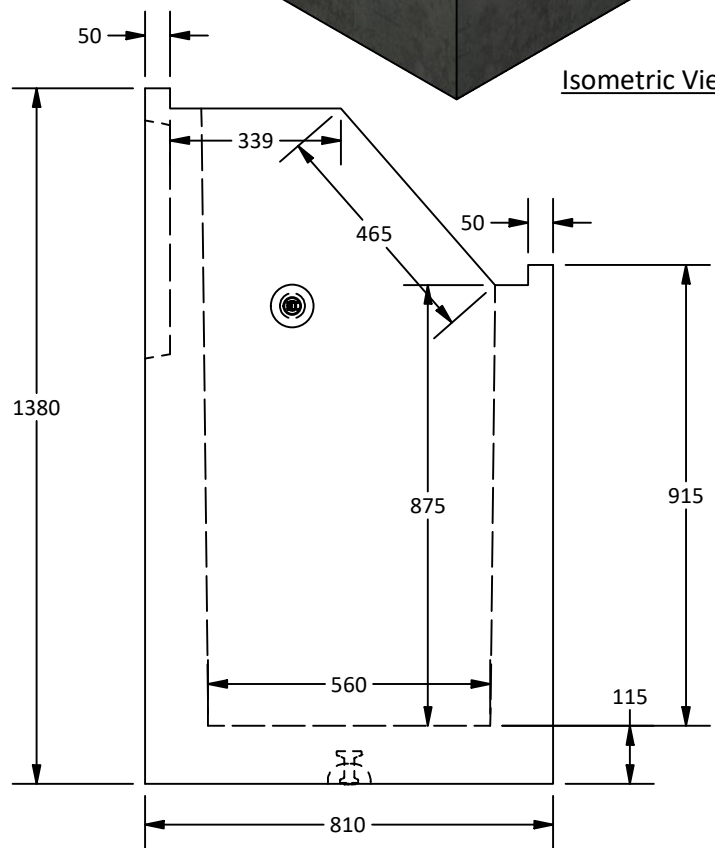
Plan View



Isometric View



Elevation View



Side View

Notes:

1. Type I Headwall is built as shown
2. Unit supplied with $\varnothing 450$ mm knockout core for inlet-outlet as shown.
3. Starcon style min. 5T/65 mm lifting inserts to be used.
Note: Sling angle to the vertical no more than 20°.
4. Suggested maximum core diameter: 400 mm.
5. Structure supplied with embedded threaded inserts for grills and handrails.
6. Bolt-on inlet/outlet grills and handrails are available upon request.
7. Minimum rebar yield strength: 400 MPa. (Steel Grade: CSA G30.18-400 Weldable)
8. Minimum concrete strength: 30 MPa.
9. All dimensions are in millimeters unless otherwise specified.

PART LIST

ITEM	QTY	PART NUMBER	MASS
1	1	TYPE I Headwall Structure	1056.62 kg
2	4	5T x 65mm Lifting Insert	0.04 kg

Amrize Canada Inc. BC Pipe and Precast are certified Q-Cast Plants, an American Concrete Pipe Association Third Party Certification for the manufacture of Pipe, Manhole, Box Culvert and Precast Items.



www.amrize.com
CHILLIWACK 1-800 667-9600 / (640) 533-1656
DUNCAN (250) 478-9581

Quality Assurance of products manufactured by Amrize Canada Inc. BC Pipe and Precast has been verified by the following third party certification programs.



This drawing is the property of Amrize Canada Inc. All information contained here in is confidential and may not be used in whole or in part without written permission from the owner.

Projection Method:
THIRD ANGLE

All Dimensions are in Millimeters.
Unless otherwise Stated.

DESCRIPTION:

TYPE I Headwall Structure

DRAWN BY: SR	DWG NO: TYPE I HW
CHK BY: MP	JOB NO.:
DATE: 25-Jul-25	SO NO.:
SCALE: 1:15	REV.:
Size: Letter	SHEET 1 OF 1