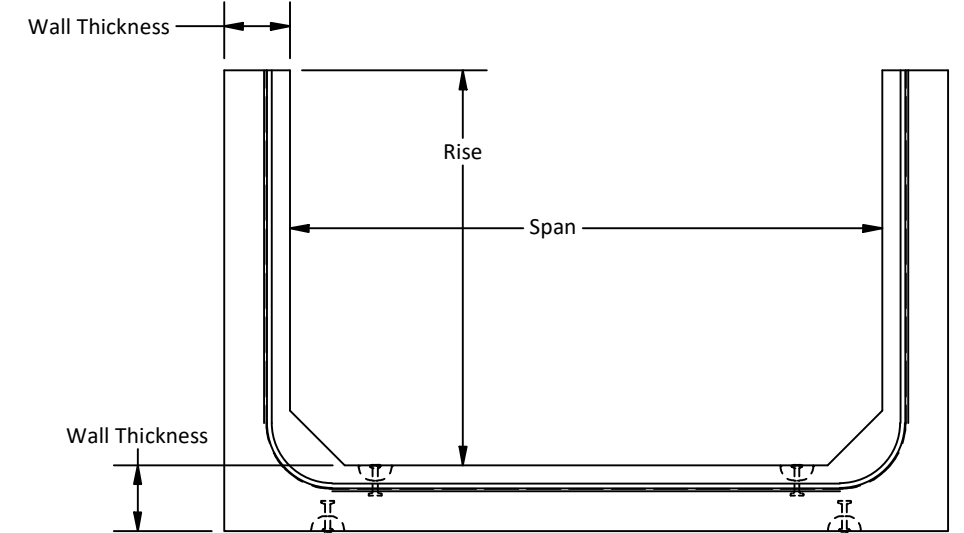
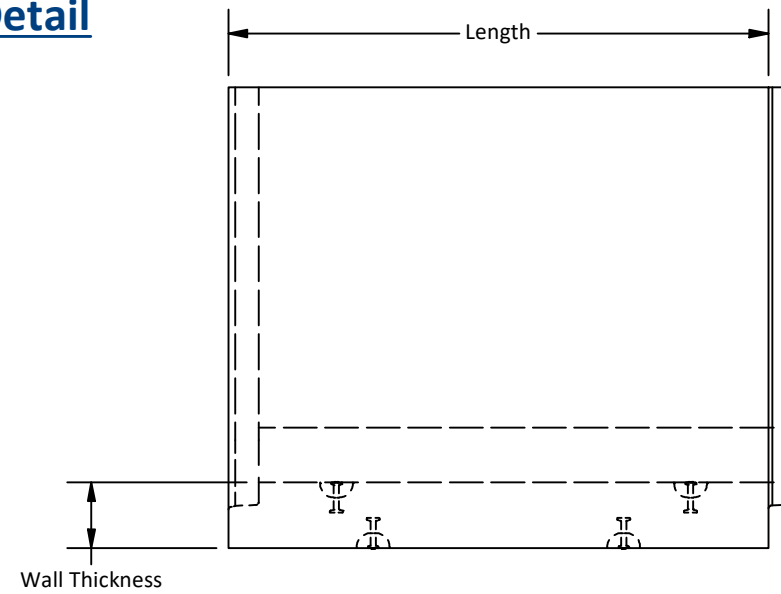
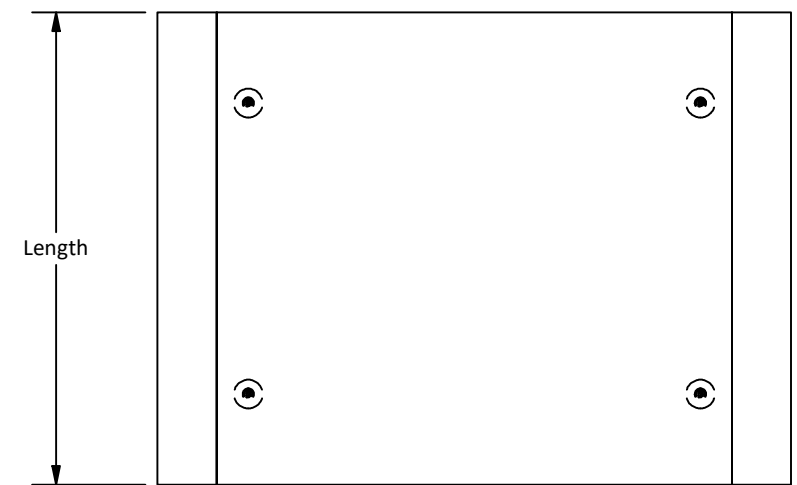
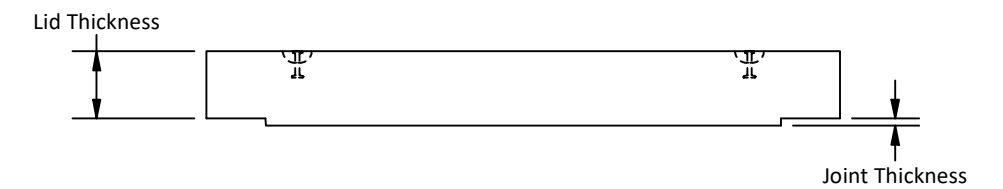
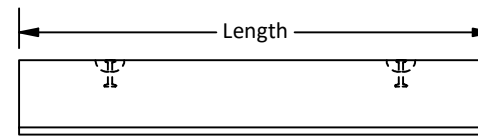


Isometric View

Box Detail



Lid Detail



Note:

1. Box culverts are manufactured in accordance with the ASTM C1433/C1433M specification.
2. Box culverts are designed to meet the required design codes and can be manufactured to comply with ASTM C1433, AASHTO, CHBDC, and BC MOT specifications.
3. Units are designed to withstand BCL-625, AASHTO HS20, or E90 live loads. (other loading options available upon request).
4. The standard length is 2.50 m; other lengths are available upon request.
5. Typical shorter lengths start from 1.25, 1.40, 1.55, 1.70, 1.85, 2.00, 2.15, and 2.30 m (in 150 mm increments from 1.25 m).
6. Supplied with a Starcon-style lifting insert as required. *Note: Sling angle to vertical must not exceed 15°.*
7. For standard box sizes, see DWG NO: BOX-1.0.
8. Box sizes marked with (***) are available in wet-cast only.
9. Dimensions are in millimeters unless otherwise specified.

Amrize Canada Inc. BC Pipe and Precast are certified Q-Cast Plants, an American Concrete Pipe Association Third Party Certification for the manufacture of Pipe, Manhole, Box Culvert and Precast Items.



All Dimensions are in Millimeters. Unless otherwise Stated



www.amrize.com
CHILLIWACK 1-800 667-9600 / (604) 533-1656
DUNCAN (250) 478-9581

This drawing is the property of the Amrize Canada Inc. All information contained here in is confidential and may not be used in whole or in part without written permission from the owner.

DESCRIPTION:

Three Sided Precast Box Culvert with Lid

DRAWN BY: SR	DWG NO.: TSBL-1.0
CHK BY: MP	JOB NO.:
DATE: 11-Jul-25	SO NO.:
SCALE: 1:35	REV.:
SIZE: 11 x 17	SHEET 1 OF 1

Quality Assurance of products manufactured by Amrize Canada Inc. BC Pipe and Precast has been verified by the following third party certification programs.



Projection Method:
THIRD ANGLE

