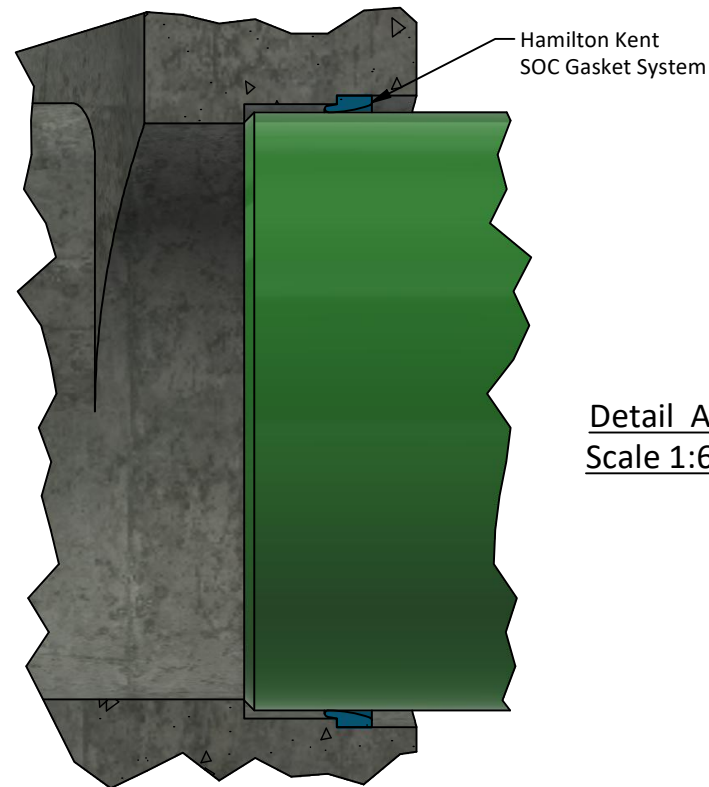


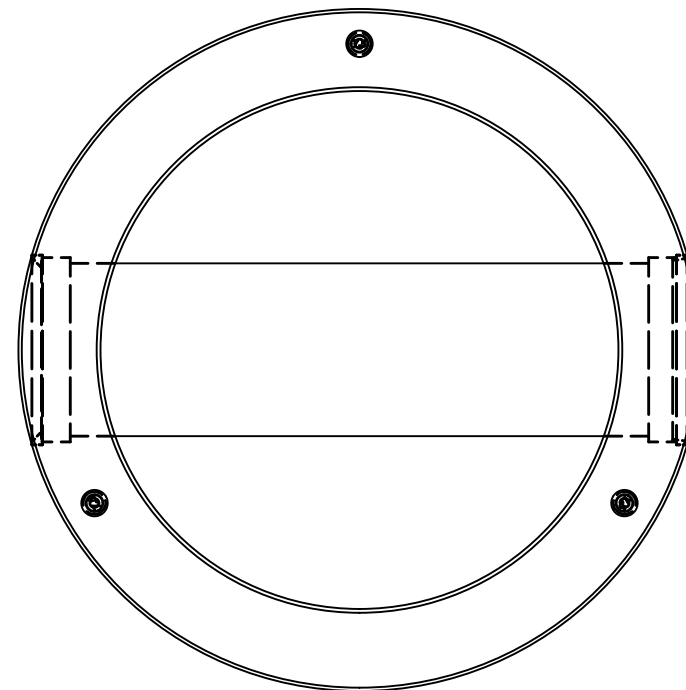
Langley Concrete Group - Mainland Manhole Dimensions	
MH Diameter [A] (mm)	Wall Thickness [B] (mm)
1067	203
1219	216
1372	216
1524	254
1829	254



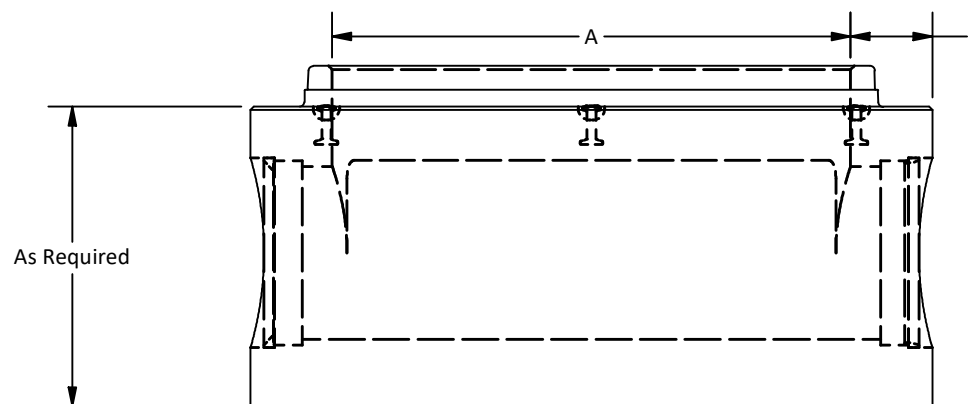
**Detail A**  
Scale 1:6

**Note:**

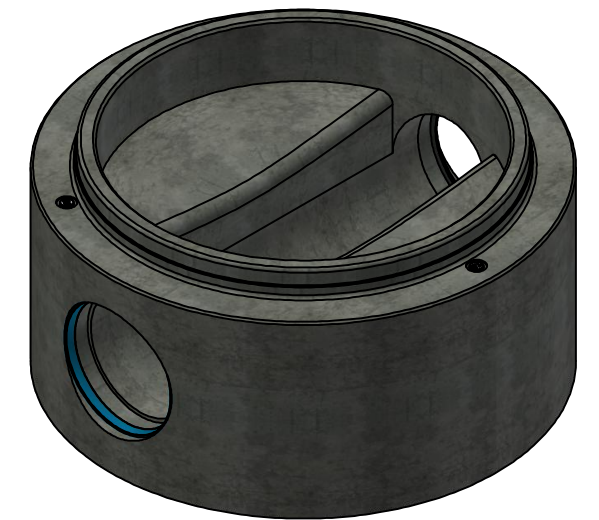
1. Monolithically poured Prebench base to be built to ASTM C478M, C923M, C443M and CSA 257.4 specifications.
2. Concrete designed to withstand HS20 / BCL 625 live loadings.
3. Benching supplied to provide smooth surfaces from inlet invert to outlet.
4. Unit supplied with Lid and riser sections as required.
5. Unit supplied with lifting insert as required. Starcon style lifting inserts to be used.  
*Note: Sling angle to the vertical no more than 15°.*
6. WWF minimum yield strength: 485 MPa.
7. Minimum rebar yield strength: 400 MPa. (Steel Grade: CSA G30.18-400 Weldable)
8. Unit supplied with Tylox Super Seal Gasket System for water and soil/silt tight gasket and joint to meet or exceed ASTM C443, ASTM C1619 and CSA A-257.3.
9. Minimum concrete strength: 30 MPa.
10. All dimensions are in millimeters unless otherwise specified.



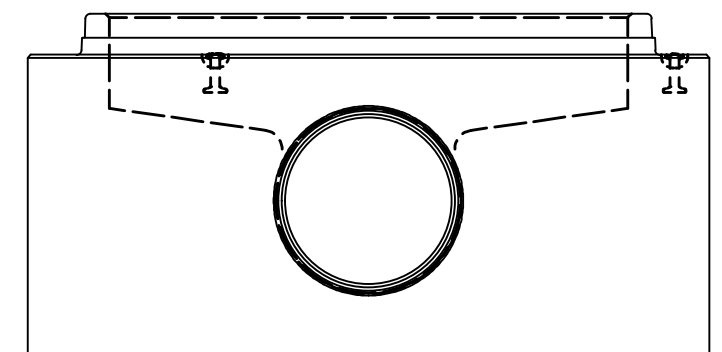
**Plan View**



**Elevation View**



**Isometric View**



**Section View**

Amrize Canada Inc. BC Pipe and Precast are certified Q-Cast Plants, an American Concrete Pipe Association Third Party Certification for the manufacture of Pipe, Manhole, Box Culvert and Precast Items.



All Dimensions are in Millimeters. Unless otherwise Stated



www.amrize.com  
CHILLIWACK 1-800 667-9600 / (604) 533-1656  
DUNCAN (250) 478-9581

DESCRIPTION:

**Pre-Bench Manhole Base**

DRAWN BY: SR

DWG NO.:

CHK BY: MP

JOB NO.: PMB-1.0

DATE: 11-Jul-25

SO NO.:

SCALE: 1:20

REV.:

SIZE: 11 x 17

SHEET 1 OF 1

Quality Assurance of products manufactured by Amrize Canada Inc. BC Pipe and Precast has been verified by the following third party certification programs.



Projection Method: THIRD ANGLE



This drawing is the property of the Amrize Canada Inc. All information contained here in is confidential and may not be used in whole or in part without written permission from the owner.