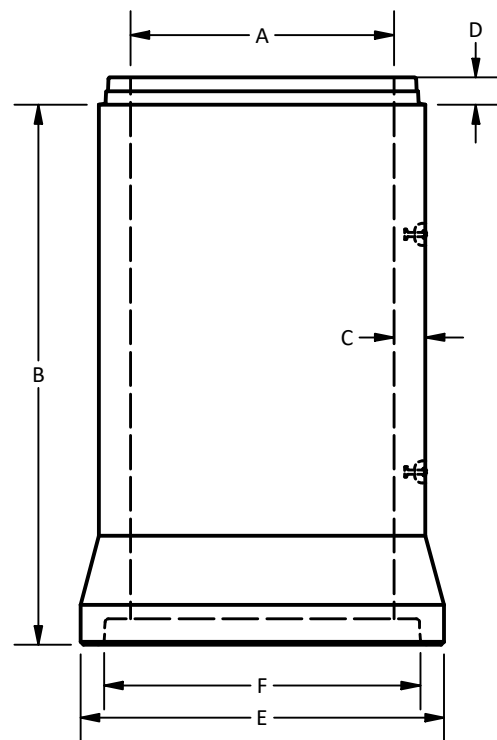
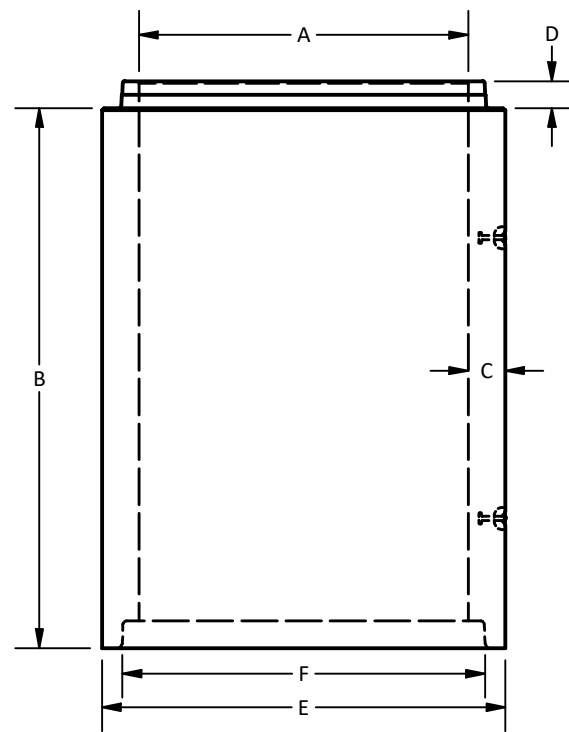


Pipe Dimensions									
Pipe Diameter (mm) A	Actual Pipe Diameter (mm)	Actual OD of the Pipe (mm)	Pipe Length (m) B	Size of Wall	Wall Thickness (mm) C	Spigot Length (mm) D	Bell Width (mm) E	Bell Diameter (mm) F	Pipe Weight (kg/m)
300	305	419	2.5	B Wall	57	90	508	389	190
375	381	495	2.5	B Wall	57	90	606	478	230
450	457	584	2.5	B Wall	64	95	702	571	300
525	533	711	2.5	C Wall	89	95	803	659	475
600	610	800	2.5	C Wall	95	98	905	748	580
675	686	862	2.5	C Wall	102	98	1006	836	710
750	762	978	2.5	C Wall	108	98	1095	914	800
900	914	1156	2.5	C Wall	121	98	1299	1092	1060
1050	1067	1333	2.5	C Wall	133	118	1500	1274	1320
1200	1219	1511	2.5	C Wall	146	121	1683	1452	1635
1350	1372	1689	2.5/3.05	C Wall	159	112	1689	1526	1850
1500	1524	1873	2.5/3.05	C Wall	171	121	1873	1691	2200
1650**	1676	2045	2.5/3.05	C Wall	184	127	2045	1823	2625
1800	1829	2222	2.5/3.05	C Wall	196	132	2222	2021	3100
2100	2134	2346	2.5/3.05	C Wall	222	143	2346	2320	4100
2400	2438	2888	2.5/3.05	B Wall	225	130	2888	2638	4615
3050	3048	3651	2.5/3.05	C Wall	298	160	3651	3327	7785



Bell & Spigot Pipe (300 - 1200mm)



Straight Wall (1350 - 3050 mm)

Notes:

- Pipe manufactured to the following specifications:
  - Non-reinforced C14-3 pipe: ASTM C14M.
  - Reinforced C76 pipe: ASTM C76-II, III, IV, V.
- 300-3050 mm pipe available with "SuperSeal" self lubricated gasket if required.
- Sanitary tested pipe available upon request.
- Min. concrete strengths to meet or exceed specific ASTM specs.
- Supplied with a Starcon-style lifting insert as required.
 

*Note: Sling angle to vertical must not exceed 15°.*
- All dimensions are in millimeters unless otherwise specified.

\*\*Limited availability, Contact LCG sales/engineering department for more details.

Amrize Canada Inc. BC Pipe and Precast are certified Q-Cast Plants, an American Concrete Pipe Association Third Party Certification for the manufacture of Pipe, Manhole, Box Culvert and Precast Items.



All Dimensions are in Millimeters. Unless otherwise Stated



www.amrize.com  
CHILLIWACK 1-800 667-9600 / (604) 533-1656  
DUNCAN (250) 478-9581

DESCRIPTION:

B.C. Pipe Details

DRAWN BY: SR	DWG NO.:
CHK BY: MP	JOB NO.: P-1.0
DATE: 11-Jul-25	SO NO.:
SCALE: 1:35	REV.: A
SIZE: 11 x 17	SHEET 1 OF 1

Quality Assurance of products manufactured by Amrize Canada Inc. BC Pipe and Precast has been verified by the following third party certification programs.



Projection Method:  
THIRD ANGLE



This drawing is the property of the Amrize Canada Inc. All information contained here in is confidential and may not be used in whole or in part without written permission from the owner.