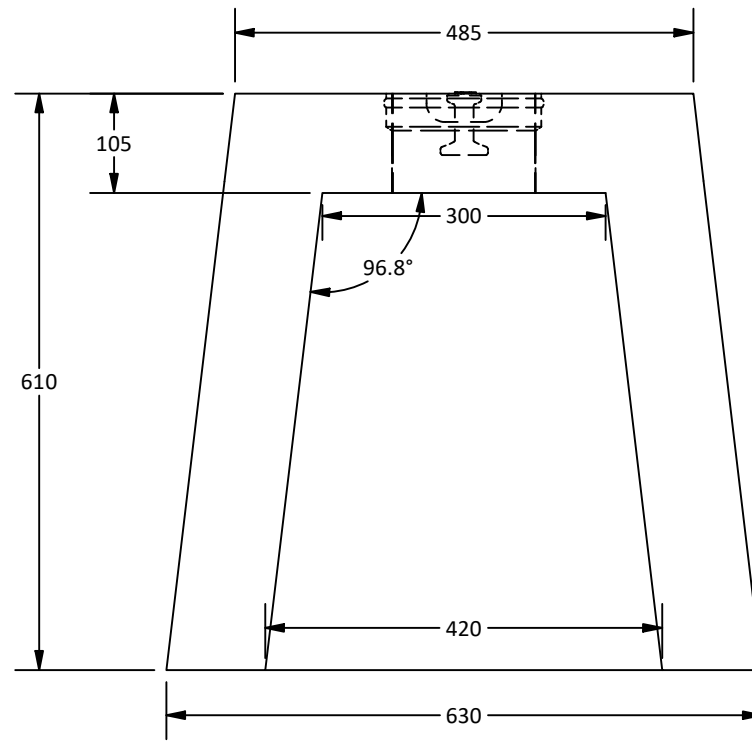


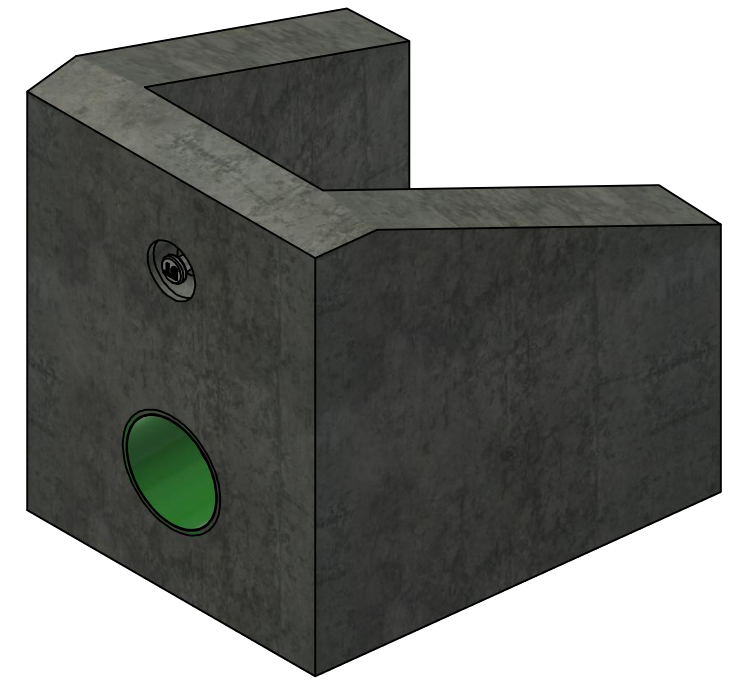
PART LIST		
QTY	PART NUMBER	MASS
1	Headwall	247.531 kg
1	5T x 65mm Lifting Insert	0.350 kg

Notes:

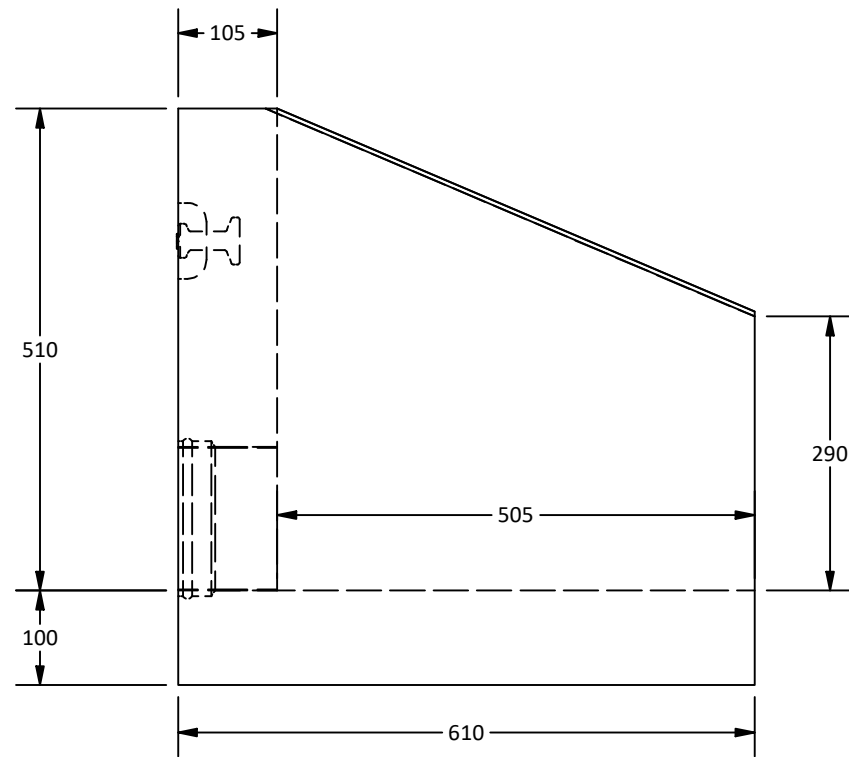
- Structure to have  $\varnothing 150 - \varnothing 305$ mm PVC stubs provided, inverts set to floor as shown.
- Wall thickness to be 105mm.
- Outlet Grillage are available.
- Minimum concrete strength: 35 MPa.
- Unit supplied with lifting inserts as required. Starcon style min. 5T x 65mm lifting inserts to be used.  
*Note: Sling angle to the vertical no more than 20°.*
- All dimensions are in millimeters unless otherwise specified.



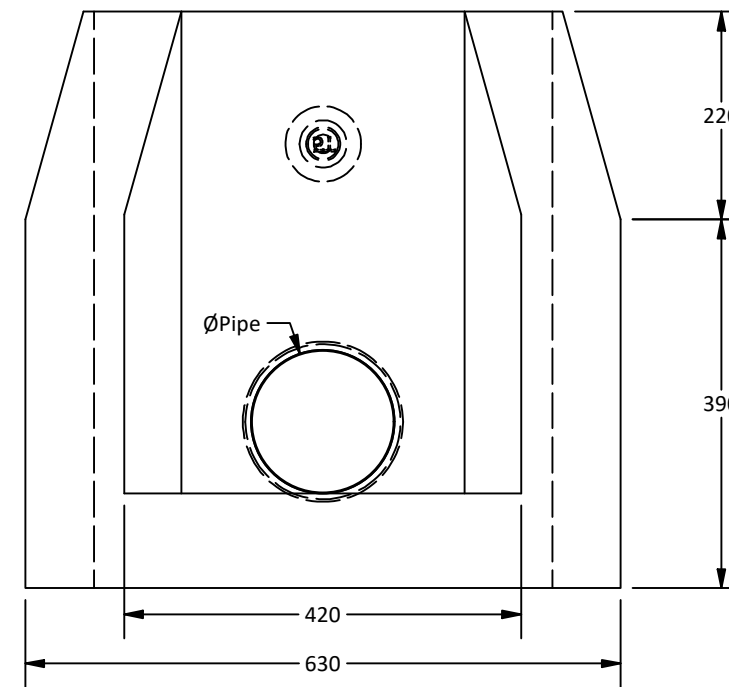
Plan View



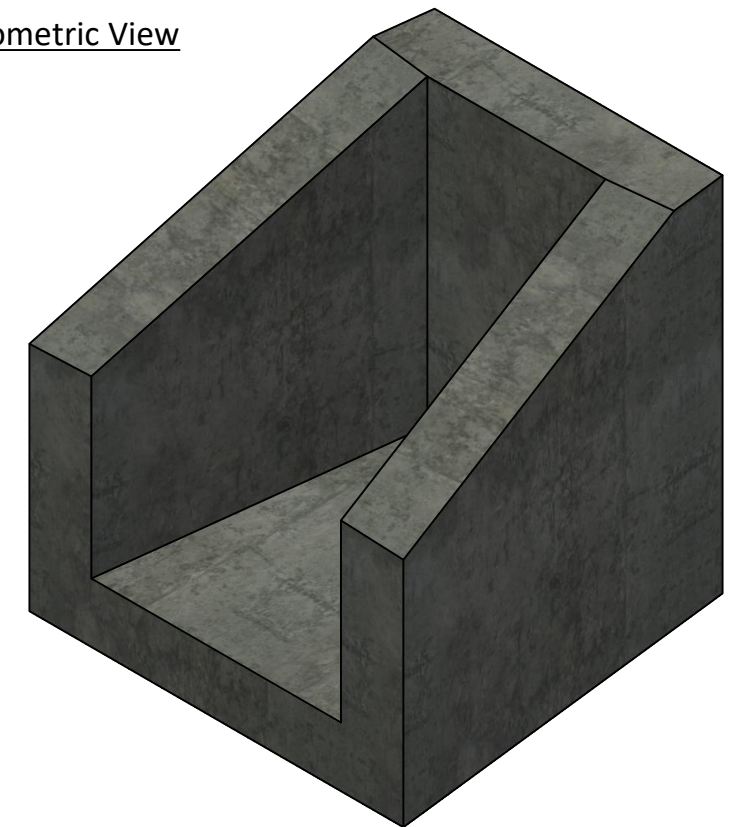
Isometric View



Side View



Elevation View



Amrize Canada Inc. BC Pipe and Precast are certified Q-Cast Plants, an American Concrete Pipe Association Third Party Certification for the manufacture of Pipe, Manhole, Box Culvert and Precast Items.



All Dimensions are in Millimeters. Unless otherwise Stated



www.amrize.com  
CHILLIWACK 1-800 667-9600 / (604) 533-1656  
DUNCAN (250) 478-9581

DESCRIPTION:

Mini Headwall Structure

DRAWN BY: SR

DWG NO.: Mini-HW

CHK BY: MP

JOB NO.:

DATE: 25-Jul-25

SO NO.:

SCALE: 1:8

REV.:

SIZE: 11 x 17

SHEET 1 OF 1

Quality Assurance of products manufactured by Amrize Canada Inc. BC Pipe and Precast has been verified by the following third party certification programs.



Projection Method: THIRD ANGLE



This drawing is the property of the Amrize Canada Inc. All information contained here in is confidential and may not be used in whole or in part without written permission from the owner.