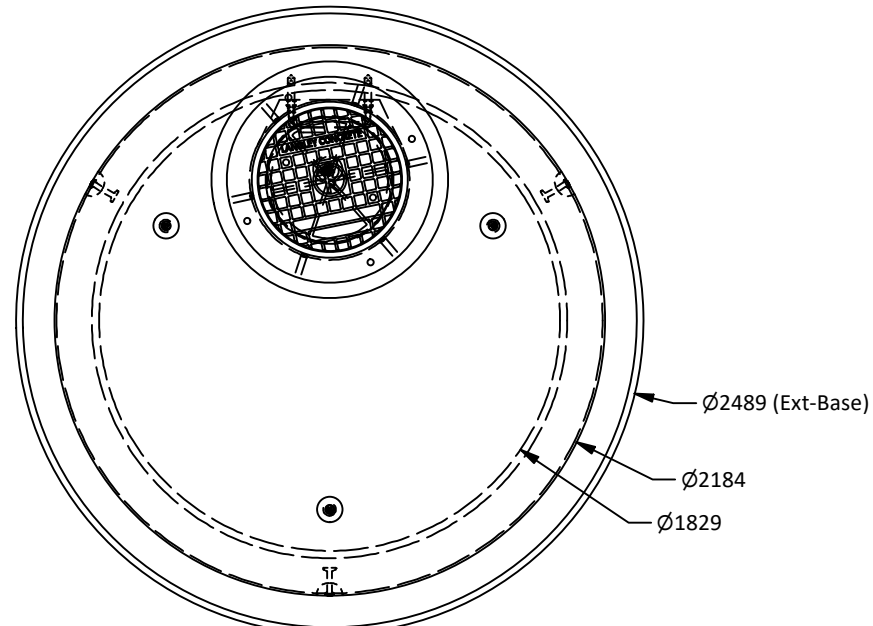
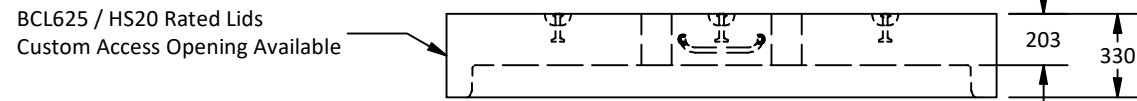
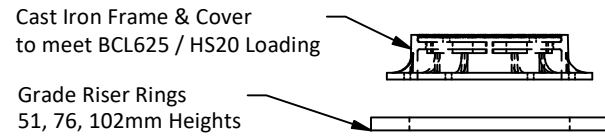


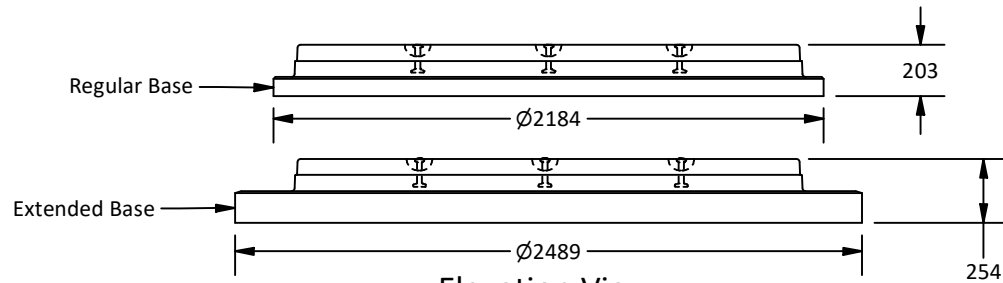
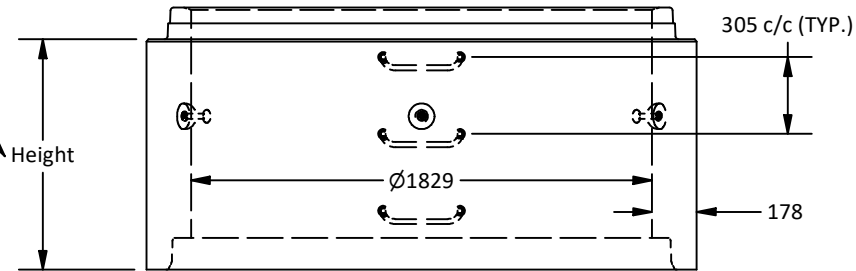
PART LIST		
ITEM	PART NUMBER	WEIGHT
1	Ø1829mm Manhole Lid	2,070 kg.
2	Ø1829mm Manhole	2,800 kg/m.
3	Ø1829mm Manhole Base	1,700 kg.
4	Ø1829mm Manhole Extended base	2,490 kg.



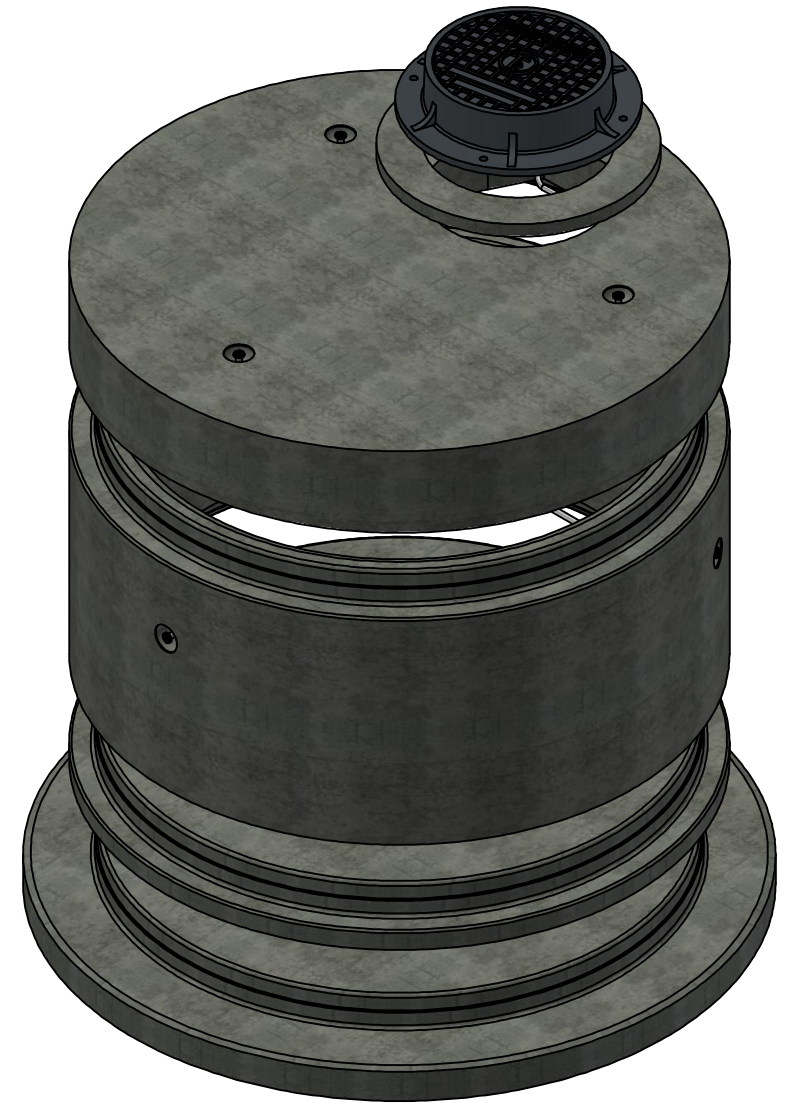
Plan View



Standard Manhole Risers:
 0.305m Height
 0.610m Height
 0.914m Height
 1.219m Height
 1.524m Height
 1.829m Height



Elevation View



Isometric View

Note:

1. Manhole manufactured to ASTM C478 and CSA 257.4 specifications.
2. Concrete designed to withstand BCL625 / HS20 live loadings.
3. Unit supplied with Alum. ladder rungs as required.
4. Unit supplied with lifting insert as required. Starcon style 5T x 140mm lifting inserts to be used.
Note: Sling angle to the vertical no more than 15°.
5. WWF minimum yield strength: 485 MPa.
6. Minimum rebar yield strength: 400 MPa. (Steel Grade: CSA G30.18-400 Weldable)
7. Unit supplied with Tylox Super Seal Gasket System for water and soil/silt tight gasket and joint to meet or exceed ASTM C443, ASTM C1619 and CSA A-257.3.
8. Minimum concrete strength:
 Barrel: 30 MPa.
 Lid & Base: 35 MPa.
9. All reinforcing to have minimum 25.4 mm of concrete cover.
10. All dimensions are in millimeters unless otherwise specified.

