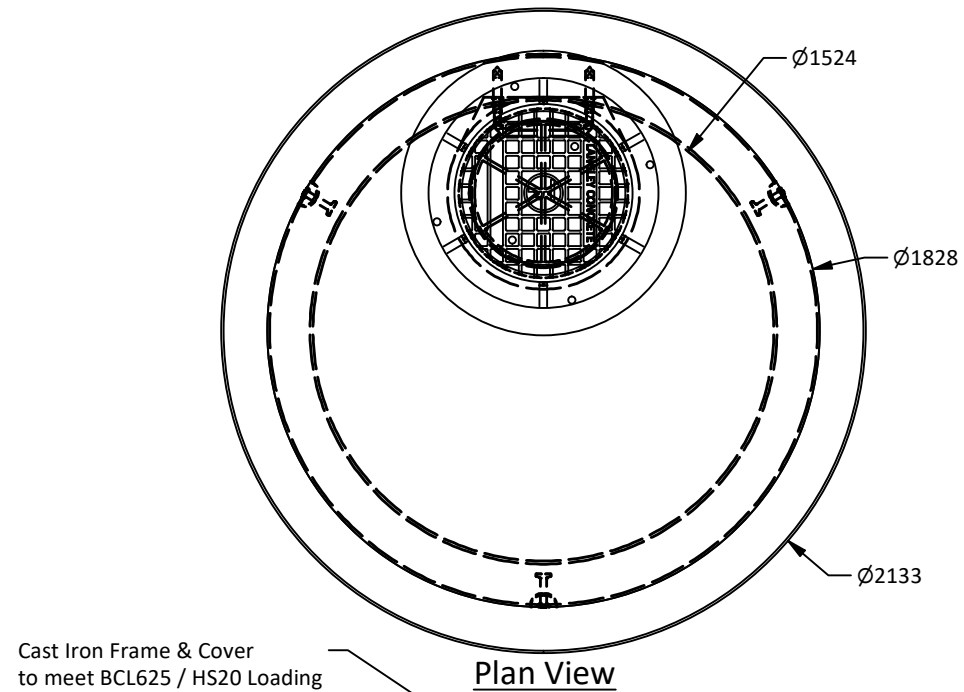


PART LIST		
ITEM	PART NUMBER	WEIGHT
1	Ø1524mm Manhole Lid	1,430 kg.
2	Ø1524mm Manhole Base	1,250 kg.
3	Ø1524mm Manhole Extended base	1,825 kg.
4	Ø1524mm Manhole	1,970 kg/m.

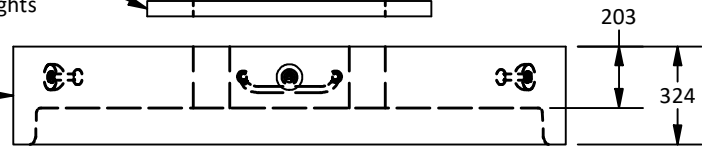


Cast Iron Frame & Cover to meet BCL625 / HS20 Loading

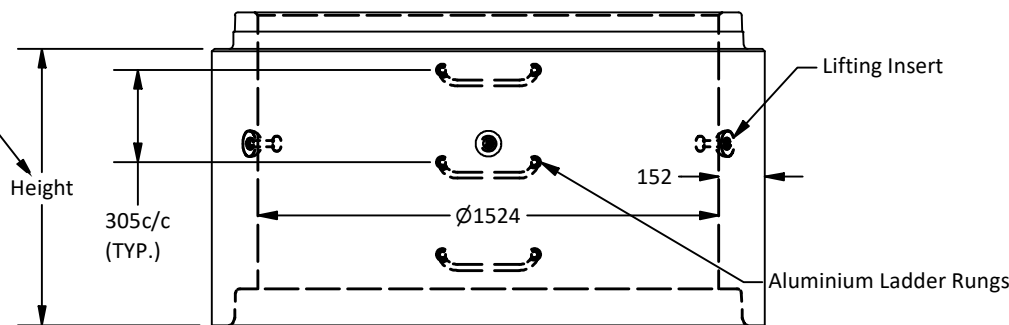
Plan View

Grade Riser Rings
51, 76, 102mm Heights

BCL625 / HS20 Rated Lids
Custom Access Opening Available

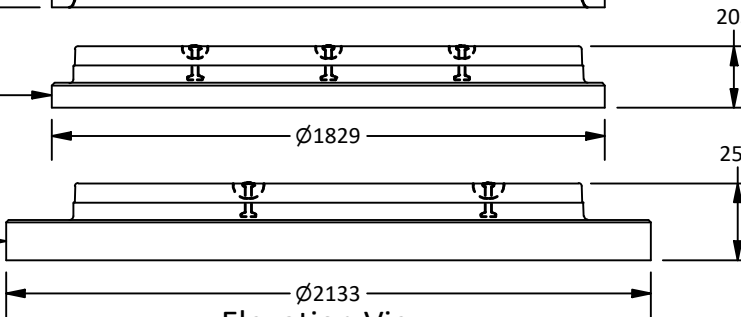


Standard Manhole Risers:
0.305m Height
0.610m Height
0.914m Height
1.219m Height



Regular Base

Extended base



Elevation View



Isometric View

Note:

- Manhole manufactured to ASTM C478 and CSA 257.4 specifications.
- Concrete designed to withstand HS20 / BCL 625 live loadings.
- Unit supplied with Alum. ladder rungs as required.
- Unit supplied with lifting insert as required. Starcon style 5T x 110mm lifting inserts to be used.
Note: Sling angle to the vertical no more than 15°.
- WWF minimum yield strength: 485 MPa.
- Minimum rebar yield strength: 400 MPa. (Steel Grade: CSA G30.18-400 Weldable)
- Unit supplied with Tylox Super Seal Gasket System for water and soil/silt tight gasket and joint to meet or exceed ASTM C443, ASTM C1619 and CSA A-257.3.
- Minimum concrete strength:
Barrel: 30 MPa.
Lid & Base: 35 MPa.
- All reinforcing to have minimum 25.4 mm of concrete cover.
- All dimensions are in millimeters unless otherwise specified.

Amrize Canada Inc. BC Pipe and Precast are certified Q-Cast Plants, an American Concrete Pipe Association Third Party Certification for the manufacture of Pipe, Manhole, Box Culvert and Precast Items.



All Dimensions are in Millimeters. Unless otherwise Stated



www.amrize.com
CHILLIWACK 1-800 667-9600 / (604) 533-1656
DUNCAN (250) 478-9581

DESCRIPTION:

Ø1524 mm Manhole
Designed for BCL625 / HS20 Loading and
5.0m Maximum Bury Depth

Quality Assurance of products manufactured by Amrize Canada Inc. BC Pipe and Precast has been verified by the following third party certification programs.



Projection Method:
THIRD ANGLE



This drawing is the property of the Amrize Canada Inc. All information contained here in is confidential and may not be used in whole or in part without written permission from the owner.

DRAWN BY: SR	DWG NO.:
CHK BY: MP	JOB NO.: MH-1500
DATE: 11-Jul-25	SO NO.:
SCALE: 1:25	REV.:
SIZE: 11 x 17	SHEET 1 OF 1