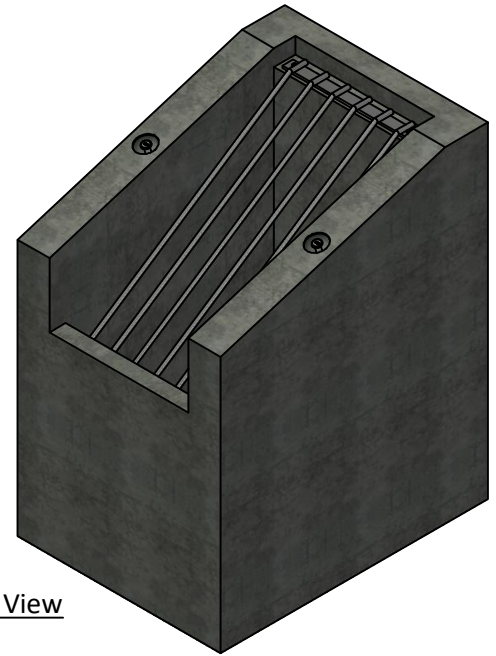
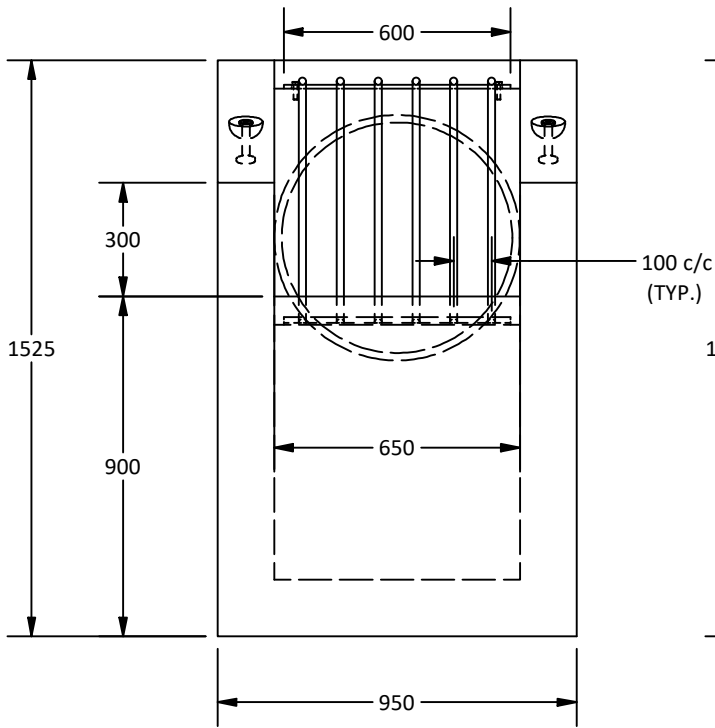


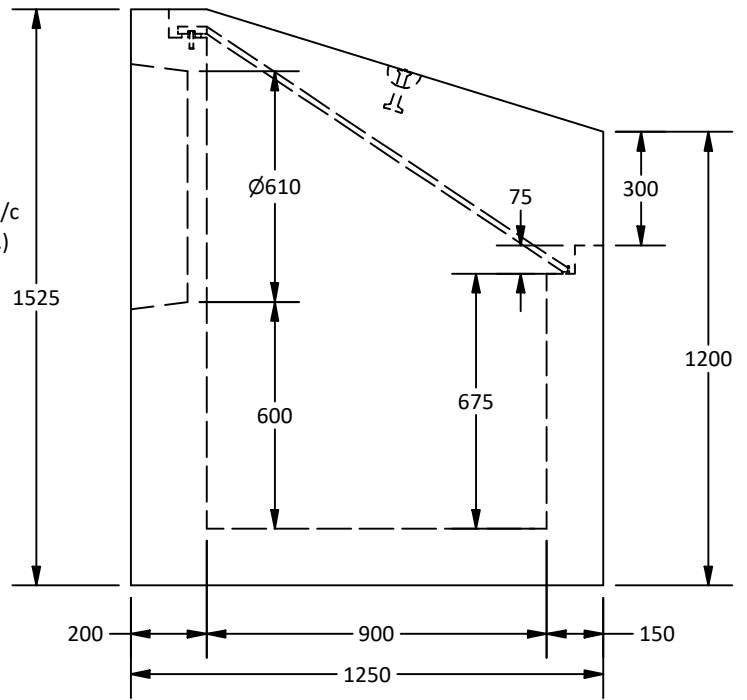
**Plan View**



**Isometric View**



**Elevation View**



**Side View**

**Notes:**

1. HW SP582-04.01 is built as shown
2. Unit supplied with  $\varnothing 610$  mm knockout core for inlet-outlet as shown.
3. Starcon style min. 5T/110 mm lifting inserts to be used.  
*Note: Sling angle to the vertical no more than 20°.*
4. Suggested maximum core diameter: 450 mm.
5. Structure supplied with embedded threaded inserts for grills and handrails.
6. Bolt-on inlet/outlet grills and handrails are available upon request.
7. Minimum rebar yield strength: 400 MPa.(Steel Grade: CSA G30.18-400 Weldable)
8. Minimum concrete strength: 30 MPa.
9. All dimensions are in millimeters unless otherwise specified.

PART LIST			
ITEM	QTY	PART NUMBER	MASS
1	1	SP582-04.01 Headwall Structure	2055.16 kg
2	2	5T x 110 mm Lifting Inserts	0.45 kg
3	1	Grillage	16.85 kg
4	2	Bolt	0.04 kg

Amrize Canada Inc. BC Pipe and Precast are certified Q-Cast Plants, an American Concrete Pipe Association Third Party Certification for the manufacture of Pipe, Manhole, Box Culvert and Precast Items.

Quality Assurance of products manufactured by Amrize Canada Inc. BC Pipe and Precast has been verified by the following third party certification programs.

Projection Method: THIRD ANGLE

All Dimensions are in Millimeters. Unless otherwise Stated.

**AMRIZE**

www.amrize.com  
CHILLIWACK 1-800 667-9600 / (640) 533-1656  
DUNCAN (250) 478-9581

This drawing is the property of Amrize Canada Inc. All information contained here in is confidential and may not be used in whole or in part without written permission from the owner.

DESCRIPTION:  
**SP582-04.01 Headwall Structure**

DRAWN BY: SR	DWG NO: HW-SP582-04.01
CHK BY: MP	JOB NO.:
DATE: 25-Jul-25	SO NO.:
SCALE: 1:20	REV.:
Size: Letter	SHEET 1 OF 1