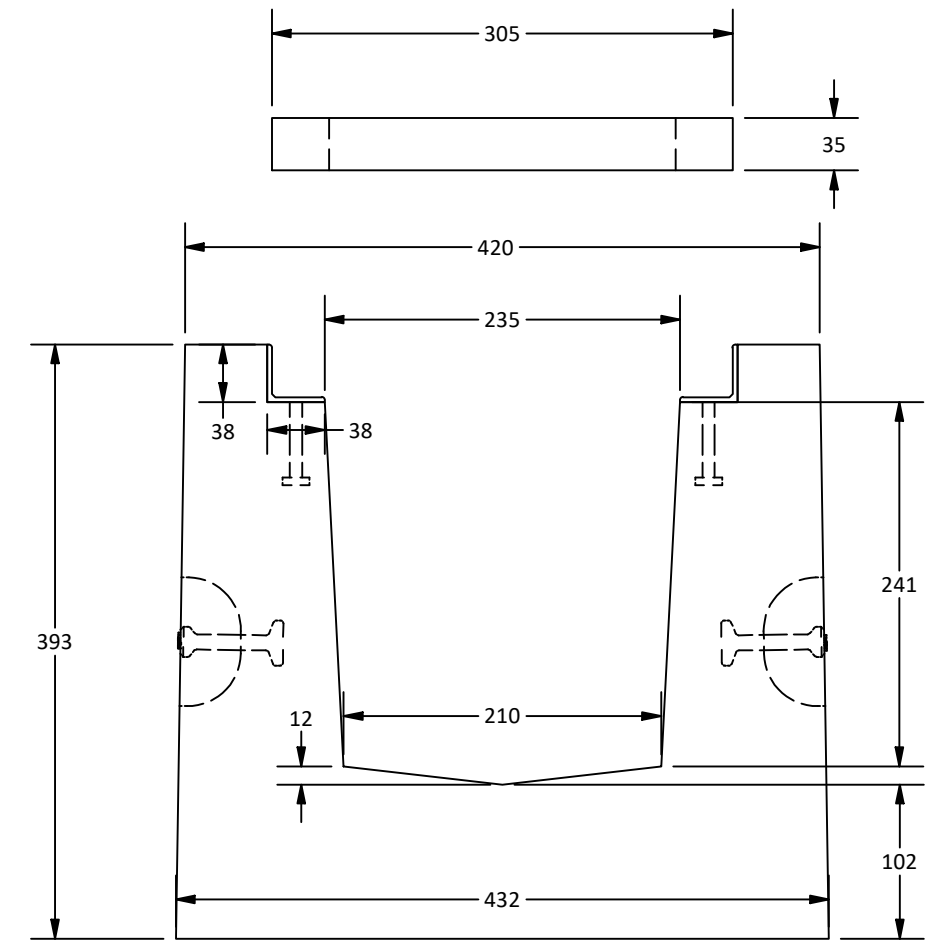
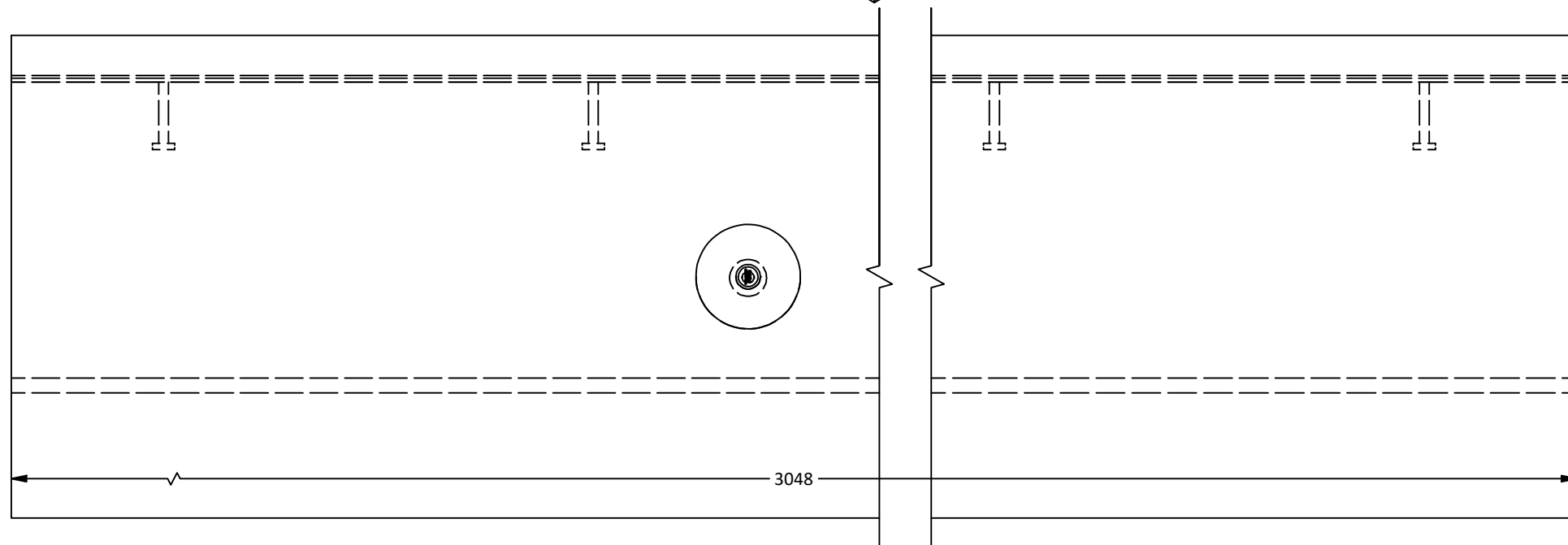


Isometric View



PART LIST		
QTY	PART NUMBER	MASS
1	Drain Trough	750.52 kg
1	Angle Iron	10.17 kg
5	Grate	33.3 kg
4	2.5T x 68mm Lifting Insert	0.09 kg

Notes:

1. For use with 305 x 610mm grates.
2. 38 x 38 x 3.2mm galvanized angle iron as shown.
3. Trough and grates rated to meet HS-20 live loads.
4. Minimum concrete strength of 35 MPa.
5. All dimensions are in millimeters unless otherwise specified.

Amrize Canada Inc. BC Pipe and Precast are certified Q-Cast Plants, an American Concrete Pipe Association Third Party Certification for the manufacture of Pipe, Manhole, Box Culvert and Precast Items.



All Dimensions are in Millimeters. Unless otherwise Stated



www.amrize.com  
CHILLIWACK 1-800 667-9600 / (604) 533-1656  
DUNCAN (250) 478-9581

DESCRIPTION:

Commercial Use Drain Trough  
Standard Drawing

DRAWN BY: SR

DWG NO.: DT-3.1

CHK BY: MP

JOB NO.:

DATE: 29-Jul-25

SO NO.: N/A

SCALE: 1:5

REV.:

SIZE: 11 x 17

SHEET 1 OF 1

Quality Assurance of products manufactured by Amrize Canada Inc. BC Pipe and Precast has been verified by the following third party certification programs.



Projection Method: THIRD ANGLE



This drawing is the property of the Amrize Canada Inc. All information contained here in is confidential and may not be used in whole or in part without written permission from the owner.