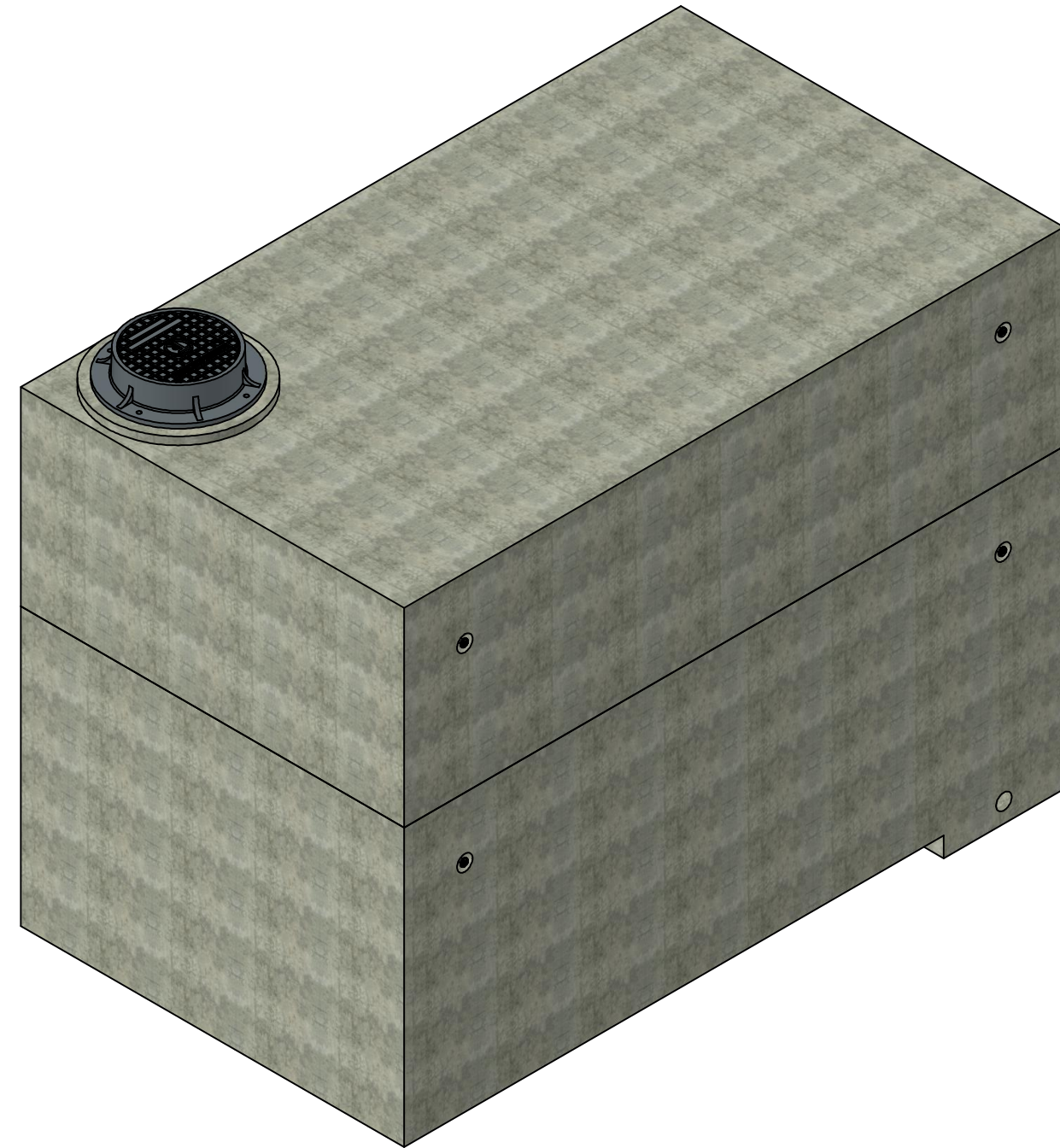


PART LIST			
ITEM	QTY	PART NUMBER	MASS
1	1	Bottom Section	16070.8 kg
2	1	Top Section	12466.6 kg
3	1	Spacer Ring 635 x 51	46.3 kg
4	9	P-14938 Ladder Rung	0.2 kg
5	1	TR 18 Cover	55 kg
6	1	TR 18 Frame	121.9 kg
7	8	7.5T x 140mm Lifting Insert	0.8 kg
8	1	Grate	3.3 kg



Isometric View

Notes:

- 4212.5 Reinforced concrete water meter chamber is built as shown.
- Unit designed to withstand BCL-625 or AASHTO HS20 live loading.
- Concrete vault designed for the following earth covers:
Minimum: 0 m.
Maximum: 2.5 m.
- Unit supplied with an opening for access as required.
- Unit supplied with ladder rungs as required.
- Unit supplied with lifting insert as required. Starcon style min. 7.5T x 140mm Lifting Insert to be used.
Note: Sling angle to the vertical is no more than 15°.
- Unit to be installed with Con-Seal 202- Butyl Rubber Sealant for a watertight joint.
- Minimum rebar yield strength: 400 MPa. (Steel Grade: CSA G30.18-400 Weldable)
- Bottom chamber supplied with trench, complete with a grate as shown.
- Unit supplied with Ø102 mm drainage hole as shown.
- Minimum concrete strength: 35 MPa.
- Vault interior can be supplied with white paint for improved visibility and cleanliness/cleanliness and the exterior can be damproofed using CS-55 or an approved equivalent.
- All dimensions are in millimeters unless otherwise specified.

Amrize Canada Inc. BC Pipe and Precast are certified Q-Cast Plants, an American Concrete Pipe Association Third Party Certification for the manufacture of Pipe, Manhole, Box Culvert and Precast Items.



All Dimensions are in Millimeters. Unless otherwise Stated



www.amrize.com
CHILLIWACK 1-800 667-9600 / (604) 533-1656
DUNCAN (250) 478-9581

DESCRIPTION:

4212.5 Water Meter Chamber
Standard Drawing

DRAWN BY: SR

DWG NO.: N/A

CHK BY: MP

JOB NO.: 4212.5-WM-STD

DATE: 16-Sep-25

SO NO.:

SCALE: 1:30

REV.:

SIZE: 11 x 17

SHEET 1 OF 2

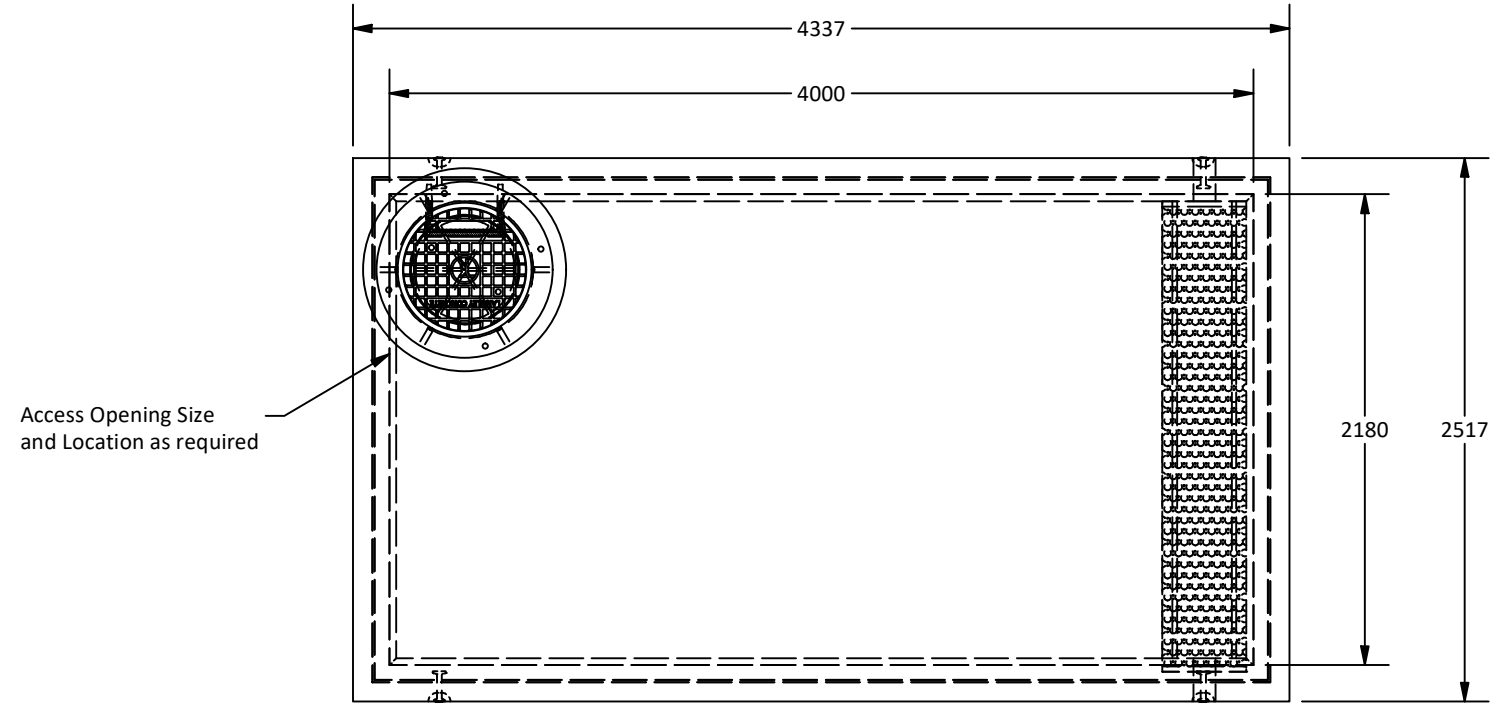
Quality Assurance of products manufactured by Amrize Canada Inc. BC Pipe and Precast has been verified by the following third party certification programs.



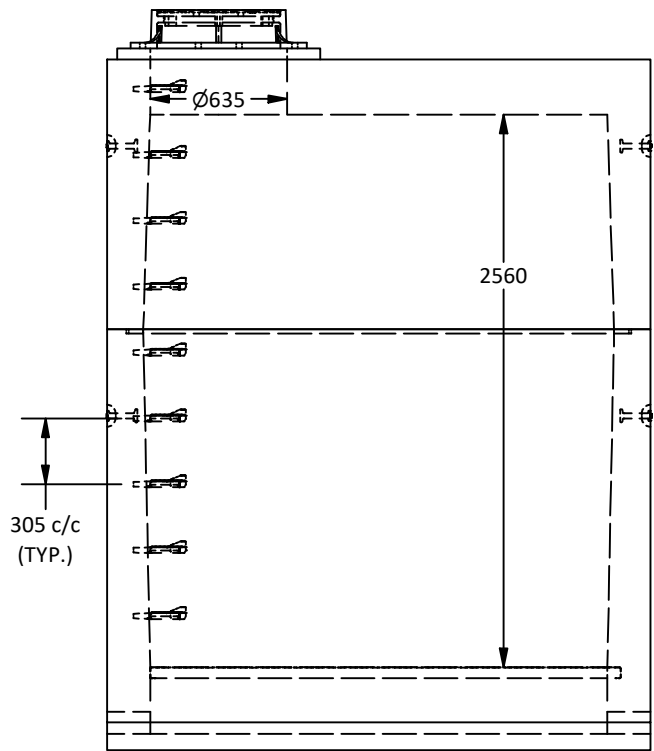
Projection Method: THIRD ANGLE



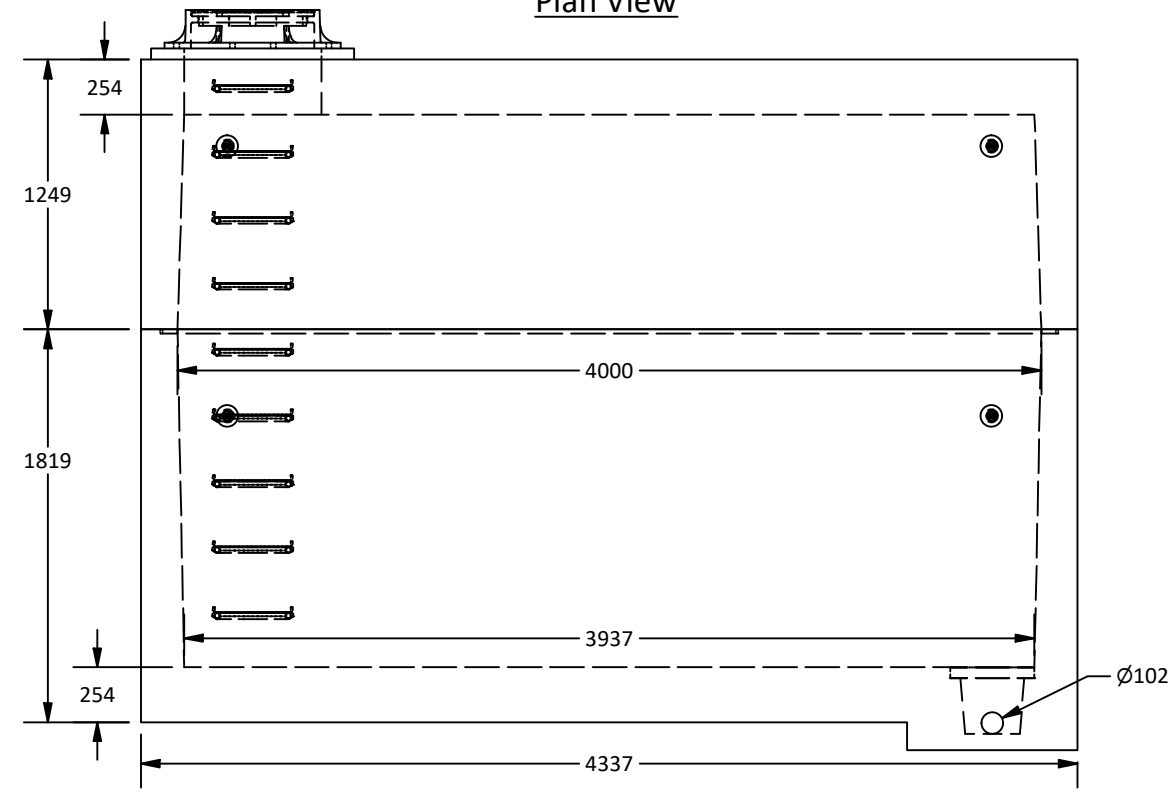
This drawing is the property of the Amrize Canada Inc. All information contained here in is confidential and may not be used in whole or in part without written permission from the owner.



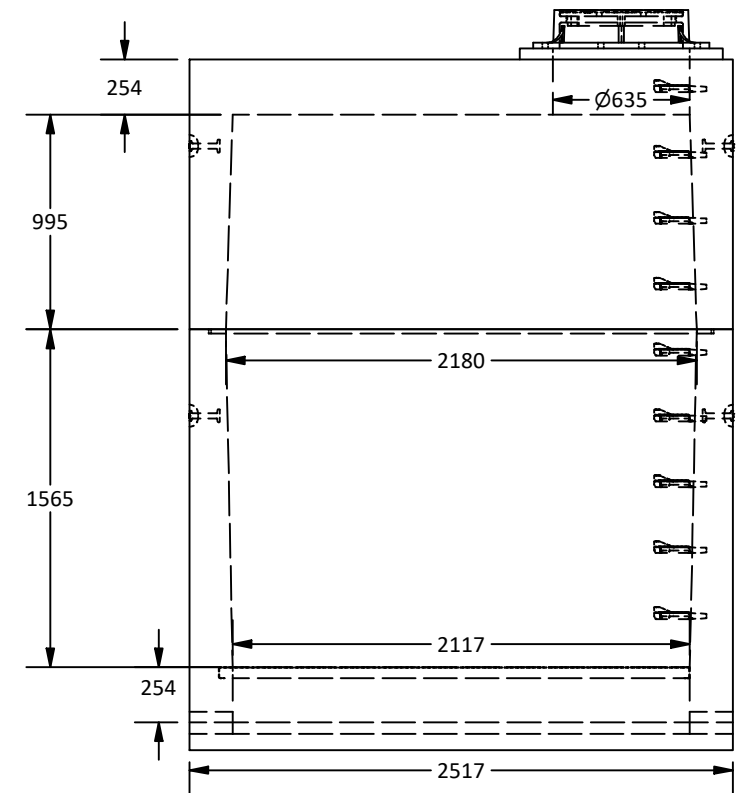
Plan View



West View



Elevation View



East View

Amrize Canada Inc. BC Pipe and Precast are certified Q-Cast Plants, an American Concrete Pipe Association Third Party Certification for the manufacture of Pipe, Manhole, Box Culvert and Precast Items.

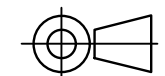


All Dimensions are in Millimeters. Unless otherwise Stated

Quality Assurance of products manufactured by Amrize Canada Inc. BC Pipe and Precast has been verified by the following third party certification programs.



Projection Method: THIRD ANGLE



www.amrize.com
CHILLIWACK 1-800 667-9600 / (604) 533-1656
DUNCAN (250) 478-9581

This drawing is the property of the Amrize Canada Inc. All information contained here in is confidential and may not be used in whole or in part without written permission from the owner.

DESCRIPTION:

4212.5 Water Meter Chamber
Standard Drawing

DRAWN BY: SR

DWG NO.: N/A

CHK BY: MP

JOB NO.: 4212.5-WM-STD

DATE: 16-Sep-25

SO NO.:

SCALE: 1:35

REV.:

SIZE: 11 x 17

SHEET 2 OF 2