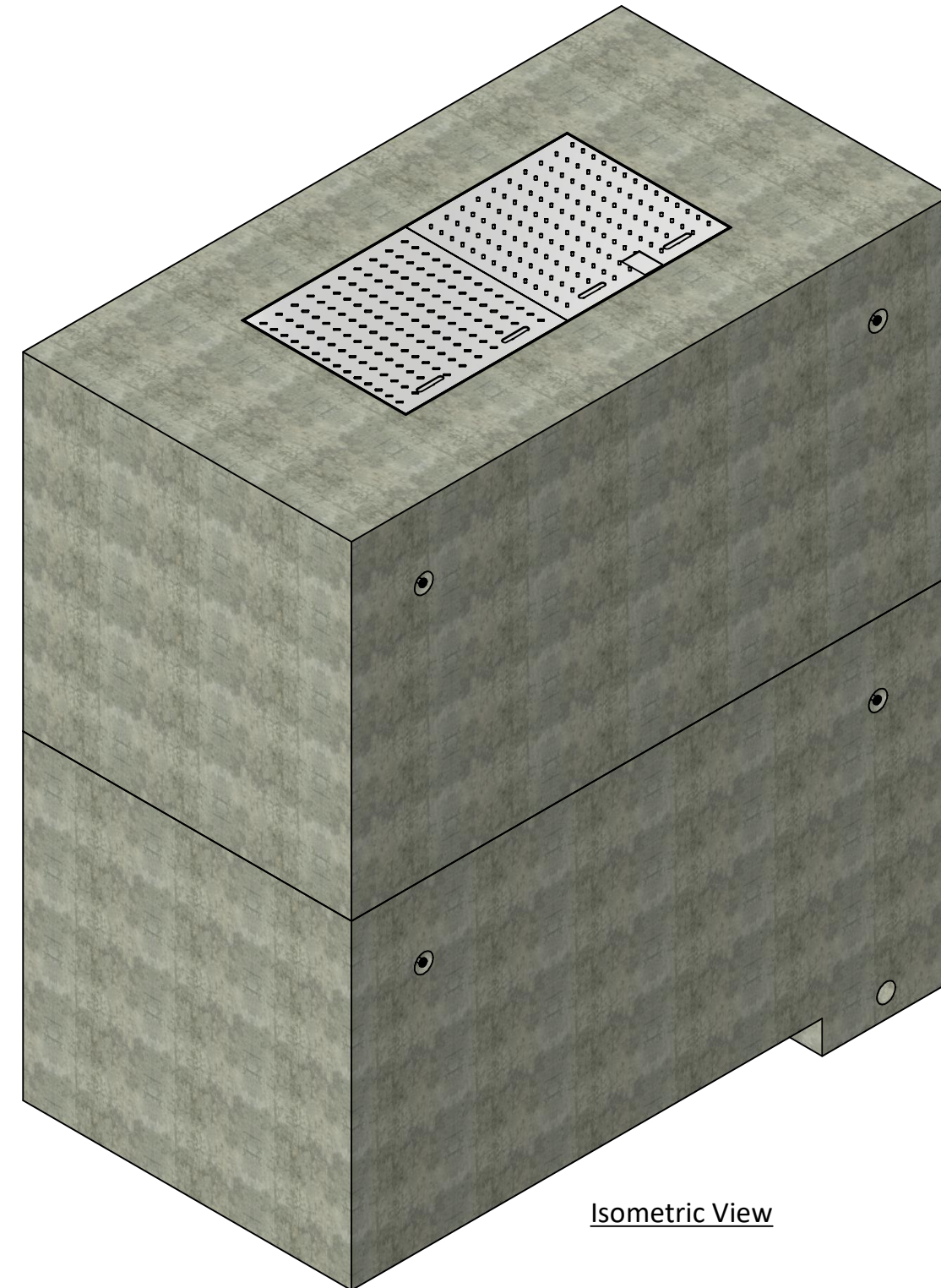


PART LIST			
ITEM	QTY	PART NUMBER	MASS
1	1	Bottom Section	8683.2 kg
2	1	Top Section	8739.9 kg
4	8	5T x 110 mm Lifting Insert	0.5 kg
4	1	Grate	2.4 kg
5	1	Double Door Hatch	182.5 kg

"The AMRIZE steel access lid provided on this vault is designed for off street locations that may occasionally receive a AASHTO H20 wheel load. This manufactured lid has been proof of design tested by applying a loading excess of 16,000 lbs. over a 10" x 20" area plus a 30% impact factor [minimum 20,800 lbs. or 104 lbs. per sq. in.]. This lid is not designed for "Direct Traffic or for use in a road way exposed to repetitive traffic loading or vehicles traveling in speeds in excess of 10MPH".

Notes:

1. 3153 Reinforced concrete water meter chamber is built as shown.
2. Unit designed to withstand BCL-625 or AASHTO HS20 live loading.
3. Concrete vault designed for the following earth covers:
Minimum: 0 m.
Maximum: 2.5 m.
4. Unit supplied with an opening for access as required.
5. Unit supplied with knock-out cores for inlet/outlet as required.
6. Unit supplied with ladder rungs as required.
7. Unit supplied with lifting insert as required. Starcon style min. 5T/ 110mm Lifting Insert to be used.
Note: Sling angle to the vertical is no more than 15°.
8. Unit to be installed with Con-Seal 202- Butyl Rubber Sealant for a watertight joint.
9. Bottom chamber supplied with trench, complete with grate as shown.
10. Unit supplied with Ø102 mm drainage hole as shown.
11. Minimum rebar yield strength: 400 MPa. (Steel Grade: CSA G30.18-400 Weldable)
12. Minimum concrete strength: 35 MPa.
13. Vault interior can be supplied with white paint for improved visibility and cleanliness/cleanliness and the exterior can be damproofed using CS-55 or an approved equivalent.
14. All dimensions are in millimeters unless otherwise specified.



Isometric View

Amrize Canada Inc. BC Pipe and Precast are certified Q-Cast Plants, an American Concrete Pipe Association Third Party Certification for the manufacture of Pipe, Manhole, Box Culvert and Precast Items.



All Dimensions are in Millimeters. Unless otherwise Stated



www.amrize.com
CHILLIWACK 1-800 667-9600 / (604) 533-1656
DUNCAN (250) 478-9581

This drawing is the property of the Amrize Canada Inc. All information contained here in is confidential and may not be used in whole or in part without written permission from the owner.

Quality Assurance of products manufactured by Amrize Canada Inc. BC Pipe and Precast has been verified by the following third party certification programs.



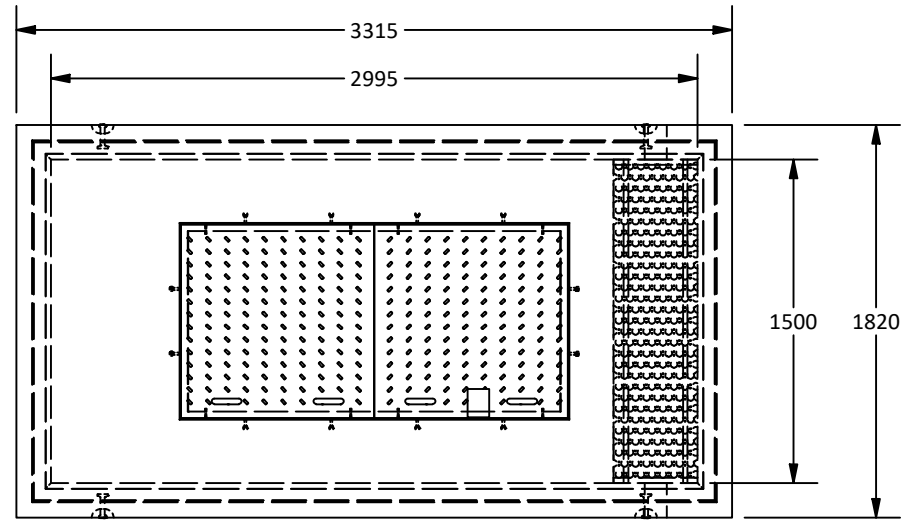
Projection Method: THIRD ANGLE



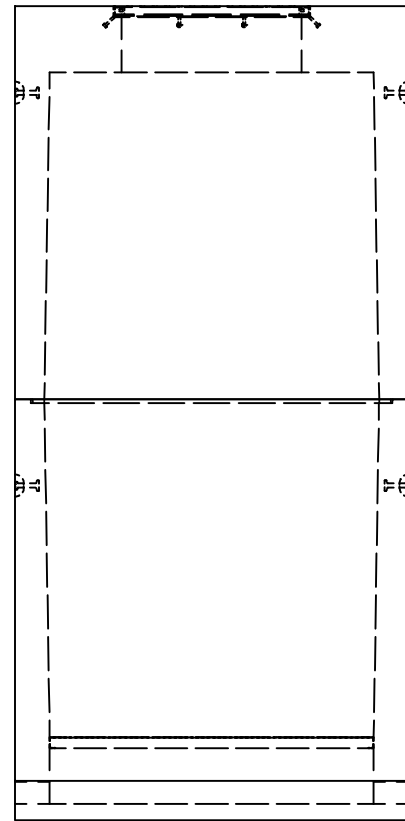
DESCRIPTION:

3153 Water Meter Chamber with Double Door Hatch Standard Drawing

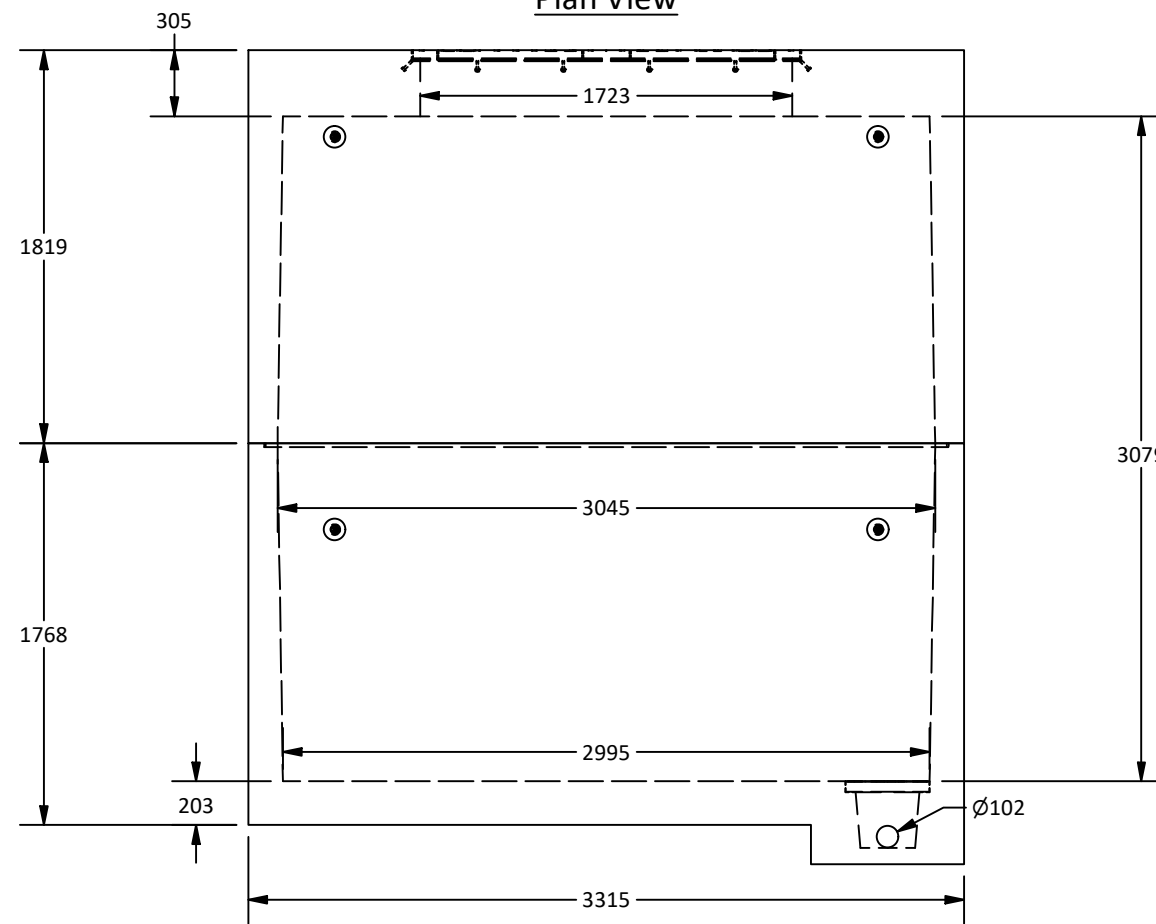
DRAWN BY: SR	DWG NO.: N/A
CHK BY: MP	JOB NO.: 3153-WM-DDH
DATE: 05-Sep-25	SO NO.:
SCALE: 1:25	REV.:
SIZE: 11 x 17	SHEET 1 OF 2



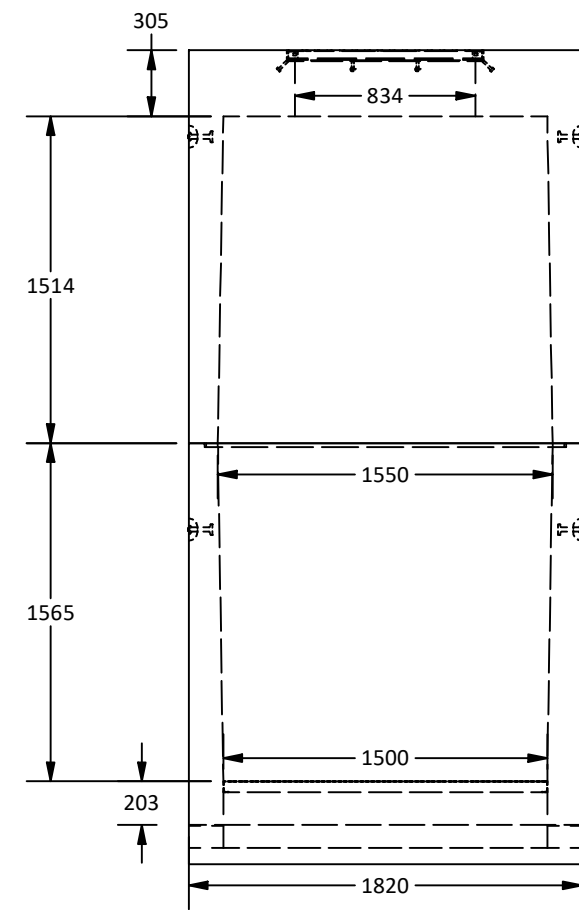
Plan View



West View



Elevation View



East View

Amrize Canada Inc. BC Pipe and Precast are certified Q-Cast Plants, an American Concrete Pipe Association Third Party Certification for the manufacture of Pipe, Manhole, Box Culvert and Precast Items.



All Dimensions are in Millimeters. Unless otherwise Stated



www.amrize.com
CHILLIWACK 1-800 667-9600 / (604) 533-1656
DUNCAN (250) 478-9581

DESCRIPTION:

3153 Water Meter Chamber
with Double Door Hatch
Standard Drawing

DRAWN BY: SR

DWG NO.: N/A

CHK BY: MP

JOB NO.: 3153-WM-DDH

DATE: 05-Sep-25

SO NO.:

SCALE: 1:35

REV.:

SIZE: 11 x 17

SHEET 2 OF 2

Quality Assurance of products manufactured by Amrize Canada Inc. BC Pipe and Precast has been verified by the following third party certification programs.



Projection Method: THIRD ANGLE



This drawing is the property of the Amrize Canada Inc. All information contained here in is confidential and may not be used in whole or in part without written permission from the owner.